



CONTACTOR, AC-3 7.5 KW/400 V, AC 230 V, 50 HZ, 3-POLE, SIZE S0, SCREW CONNECTION

Figure similar

product brand name	SIRIUS
Product designation	power contactor
General technical data:	
Degree of pollution	3
Mechanical service life (switching cycles)	
<ul style="list-style-type: none"> • of the contactor typical 	10 000 000
<ul style="list-style-type: none"> • of the contactor with added electronics-compatible auxiliary switch block typical 	5 000 000
<ul style="list-style-type: none"> • of the contactor with added auxiliary switch block typical 	10 000 000
Protection class IP	
<ul style="list-style-type: none"> • on the front 	IP20
<ul style="list-style-type: none"> • of the terminal 	IP20
Equipment marking	
<ul style="list-style-type: none"> • acc. to DIN EN 61346-2 	Q
<ul style="list-style-type: none"> • acc. to DIN EN 81346-2 	Q
Main circuit:	
Number of poles for main current circuit	3
Number of NC contacts for main contacts	0
Number of NO contacts for main contacts	3
Operating current	
<ul style="list-style-type: none"> • at AC-1 <ul style="list-style-type: none"> — at 400 V at ambient temperature 40 °C Rated value 	40 A

— up to 690 V at ambient temperature 40 °C Rated value	40 A
— up to 690 V at ambient temperature 60 °C Rated value	35 A
• at AC-3 — at 400 V Rated value	17 A
• at AC-4 at 400 V Rated value	15.5 A
Operating current with 1 current path	
• at DC-1 — at 24 V Rated value	35 A
— at 110 V Rated value	4.5 A
• at DC-3 at DC-5 — at 24 V Rated value	20 A
— at 110 V Rated value	2.5 A
Operating current with 2 current paths in series	
• at DC-1 — at 24 V Rated value	35 A
— at 110 V Rated value	35 A
• at DC-3 at DC-5 — at 110 V Rated value	15 A
— at 24 V Rated value	35 A
Operating current with 3 current paths in series	
• at DC-1 — at 24 V Rated value	35 A
— at 110 V Rated value	35 A
• at DC-3 at DC-5 — at 110 V Rated value	35 A
— at 24 V Rated value	35 A
Active power loss at AC-3 at 400 V for rated value of the operating current per conductor	0.9 W
Control circuit/ Control:	
Type of voltage of the control supply voltage	AC
Control supply voltage with AC	
• at 50 Hz Rated value	230 V
• Rated value	50 Hz
Operating range factor control supply voltage rated value of the magnet coil with AC	
• at 50 Hz	0.8 ... 1.1
Auxiliary circuit:	
Number of NC contacts	
• for auxiliary contacts	

— instantaneous contact	0
Number of NO contacts	
• for auxiliary contacts	
— instantaneous contact	0
Operating current at AC-15	
• at 230 V Rated value	6 A
• at 400 V Rated value	3 A
Contact reliability of the auxiliary contacts	1 faulty switching per 100 million (17 V, 1 mA)

Short-circuit:

Design of the fuse link	
• for short-circuit protection of the main circuit	
— with type of assignment 1 required	fuse gL/gG: 63 A
— with type of assignment 2 required	fuse gL/gG: 25 A
• for short-circuit protection of the auxiliary switch required	fuse gL/gG: 10 A

Installation/ mounting/ dimensions:

Mounting type	screw and snap-on mounting onto 35 mm standard mounting rail according to DIN EN 50022
• Side-by-side mounting	Yes
Height	85 mm
Width	45 mm
Depth	91 mm
Required spacing	
• for grounded parts	
— at the side	6 mm

Connections/ Terminals:

Type of electrical connection	
• for main current circuit	screw-type terminals
• for auxiliary and control current circuit	screw-type terminals
Type of connectable conductor cross-section	
• for main contacts	
— solid	2x (1 ... 2.5 mm ²), 2x (2.5 ... 6 mm ²), max. 2x 10 mm ²
— single or multi-stranded	2x (1 ... 2,5 mm ²), 2x (2,5 ... 6 mm ²), max. 2x 10 mm ²
— finely stranded with core end processing	2x (1 ... 2.5 mm ²), 2x (2.5 ... 6 mm ²)
• for AWG conductors for main contacts	2x (16 ... 12), 2x (14 ... 10), 1x 8
• for auxiliary contacts	
— solid	2x (0.5 ... 1.5 mm ²), 2x (0.75 ... 2.5 mm ²), max. 2x (0.75 ... 4 mm ²)
— finely stranded with core end processing	2x (0.5 ... 1.5 mm ²), 2x (0.75 ... 2.5 mm ²)
• for AWG conductors for auxiliary contacts	2x (20 ... 16), 2x (18 ... 14), 1x 12

Mechanical data:





Size of contactor	S0
--------------------------	----



Ambient conditions:

Installation altitude at height above sea level maximum	2 000 m
Ambient temperature <ul style="list-style-type: none">during operation	-25 ... +60 °C

Certificates/ approvals:

General Product Approval	Functional Safety/Safety of Machinery	Declaration of Conformity
 CCC	 UL	 EG-Konf.
 CSA	 EAC	Type Examination

Test Certificates	Shipping Approval
Special Test Certificate	 ABS
Type Test Certificates/Test Report	 DNV
	 GL
	 LRS

Shipping Approval	other
 RINA	other
 RMRS	Environmental Confirmations
	Confirmation

Further information

Information- and Downloadcenter (Catalogs, Brochures,...)

<http://www.siemens.com/industrial-controls/catalogs>

Industry Mall (Online ordering system)

<http://www.siemens.com/industrymall>

Cax online generator

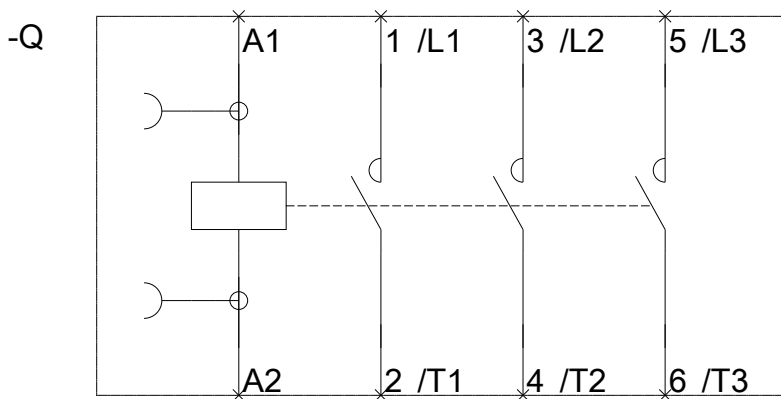
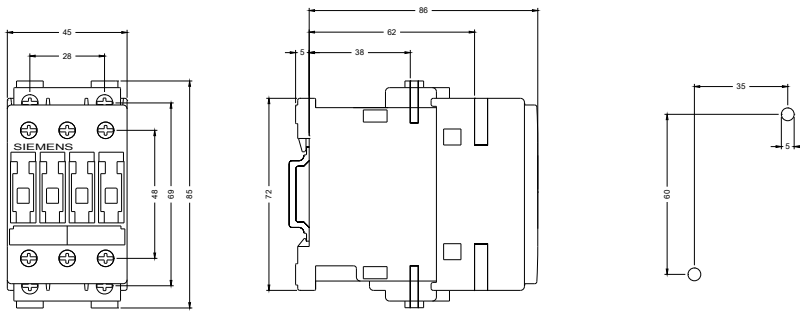
<http://support.automation.siemens.com/WW/CAXorder/default.aspx?lang=en&mlfb=3RT10251AP00>

Service&Support (Manuals, Certificates, Characteristics, FAQs,...)

<https://support.industry.siemens.com/cs/ww/en/ps/3RT10251AP00>

Image database (product images, 2D dimension drawings, 3D models, device circuit diagrams, EPLAN macros, ...)

http://www.automation.siemens.com/bilddb/cax_de.aspx?mlfb=3RT10251AP00&lang=en



last modified:

14.05.2015