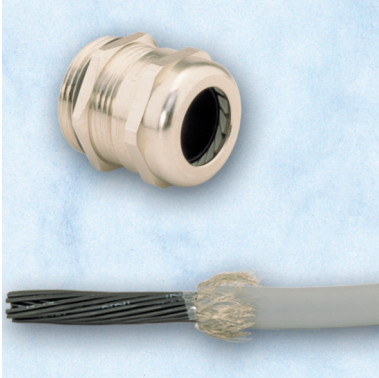




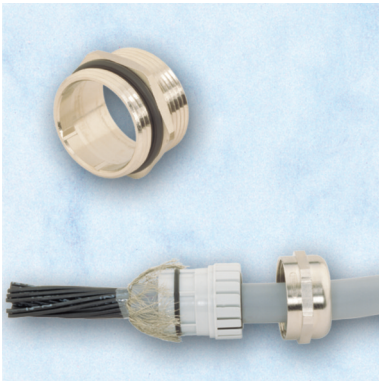
ASSEMBLY INSTRUCTIONS

HSK-M-EMC / METRICA-M-EMC



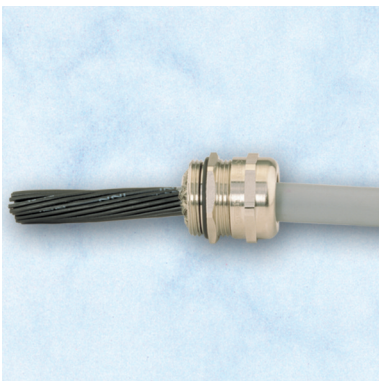
Step 1

- // Strip cable
- // Expose braided shield



Step 2

- // Feed cable through dome nut and clamping insert
- // Fold braided shield over clamping insert
- // Make sure that braided shield overlaps the O-Ring by 3/32" (2 mm)



Step 3

- // Push clamping insert into body and tighten dome nut
- // Assemble into housing
- // Finished!